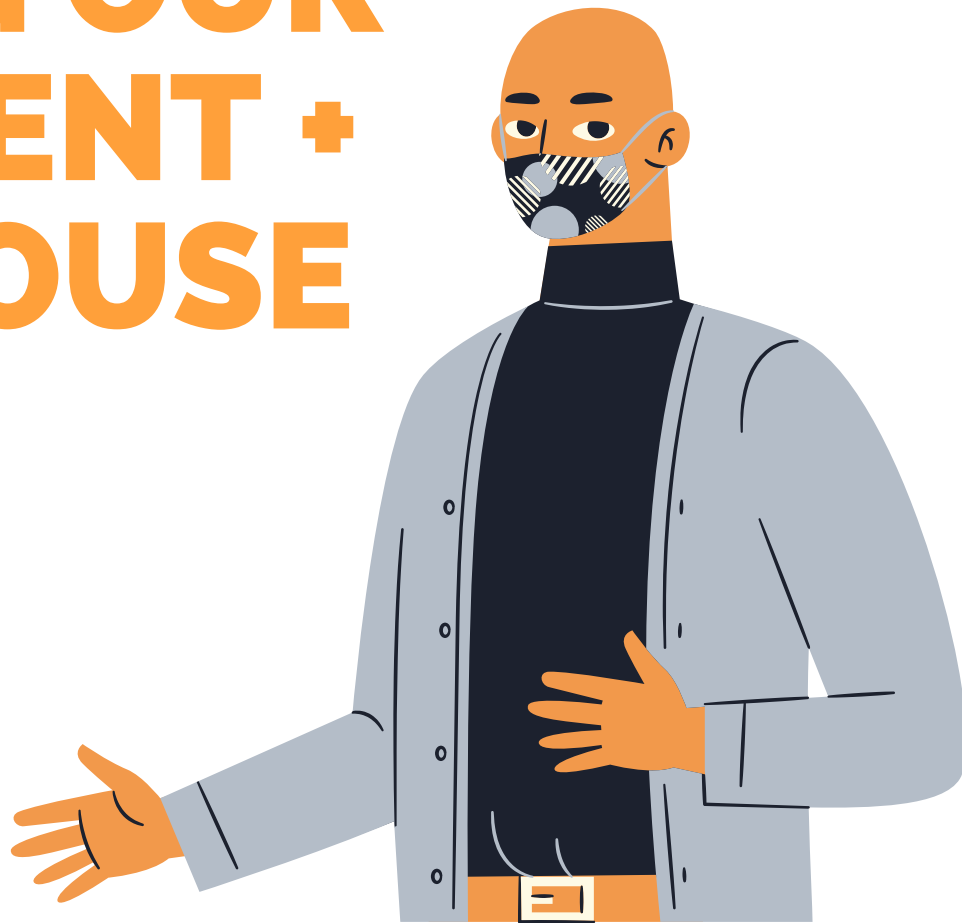


KEEPING OUR EQUIPMENT + WAREHOUSE SAFE



Safety is Our Top Priority

Reopening requires all of us to move forward together by practicing social distancing, wearing facial coverings, following proper prevention hygiene, such as washing hands frequently and using alcohol-based (at least 60% alcohol) hand sanitizer when soap and water are not available, as well as cleaning and disinfection to reduce our risk of exposure to the virus that causes COVID-19.

Therefore, we are using EPA-approved disinfectant products, as well as EPA recommended alternative disinfectants – for example, 1/3 cup of bleach added to 1 gallon of water, and 70% alcohol solutions.

Keeping Our Equipment Safe



Telescopic Camera Cranes - cleaning and sanitization of all touch-points using 70% rubbing alcohol, fresh clothes for each cleaning, and crew will be wearing personal protective equipment such as: nitrile gloves, masks, and protective booties.

Keeping Our Equipment Safe



Mobile Bases - cleaning and sanitization of all touch-points using using 1/3 cup of bleach added to 1 gallon of water and 70% rubbing alcohol, fresh clothes for each cleaning, and our designated crew member will be wearing all appropriate personal protective equipment such as: nitrile gloves, masks, and protective booties.



Rickshaw Dolly - cleaning and sanitization of all touch-points using 1/3 cup of bleach added to 1 gallon of water and 70% rubbing alcohol, fresh clothes for each cleaning, and our designated crew member will be wearing all appropriate personal protective equipment such as: nitrile gloves, masks, and protective booties.



Keeping Our Equipment Safe



Grip Kits - cleaning and sanitization of all touch-points using 70% rubbing alcohol, fresh clothes for each cleaning, and our designated crew member will be wearing all appropriate personal protective equipment such as: nitrile gloves, masks, and protective booties.



Trailers + Trucks - cleaning and sanitization of all touch-points using 1/3 cup of bleach added to 1 gallon of water and 70% rubbing alcohol, fresh clothes for each cleaning, and our designated crew member will be wearing all appropriate personal protective equipment such as: nitrile gloves, masks, and protective booties.



Keeping Our Equipment Safe



Action Dolly - cleaning and sanitization of all touch-points using 70% rubbing alcohol, fresh clothes for each cleaning, and our designated crew member will be wearing all appropriate personal protective equipment such as: nitrile gloves, masks, and protective booties.

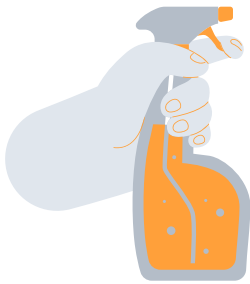


Dutti Dolly- cleaning and sanitization of all touch-points using 1/3 cup of bleach added to 1 gallon of water and 70% rubbing alcohol, fresh clothes for each cleaning, and our designated crew member will be wearing all appropriate personal protective equipment such as: nitrile gloves, masks, and protective booties.



Keeping Our Warehouse Safe

Clean hands policy as soon as you walk into one of our warehouses and we have scheduled **regular hand washing** reminders



Disinfect high contact points, like doorknobs, tables, light switches, work benches, and desks regularly

Stop hand shakes and use **non-contact greeting methods**



Wear necessary personal protective equipment

Use **video conferencing** instead of face-to-face meetings

When video calls are not possible, hold your meetings in **well-ventilated rooms and spaces**



Increase ventilation by opening windows or adjusting air conditioning