

SUPERTECHNO

50

Supertechno 50 Specs:

Max lens height	50'
Max overslung lens height	52'- 6"
Telescoping travel	37'- 5"
Telescoping max speed	6'- 6" per sec
Full extension reach from post	48"- 5"
Full retracted reach from post	11
Rear length from post	12'- 2"
Overall length of arm retracted	23'- 2"
Overall length extended	60'- 6"
Min clearance	6'- 10"
Max arm tilt angle	60 degrees
Base width	6'- 5"
Base length	8'
Track width center to center	6'- 8"
Max payload	186 lbs
Arm weight	1276 lbs
Base weight	1086 lbs
Total counterweight in carts	1786 lbs
Total crane weight with payload	5100 lbs
10' section of Technocrane track	150 lbs

SUPERTECHNO 50

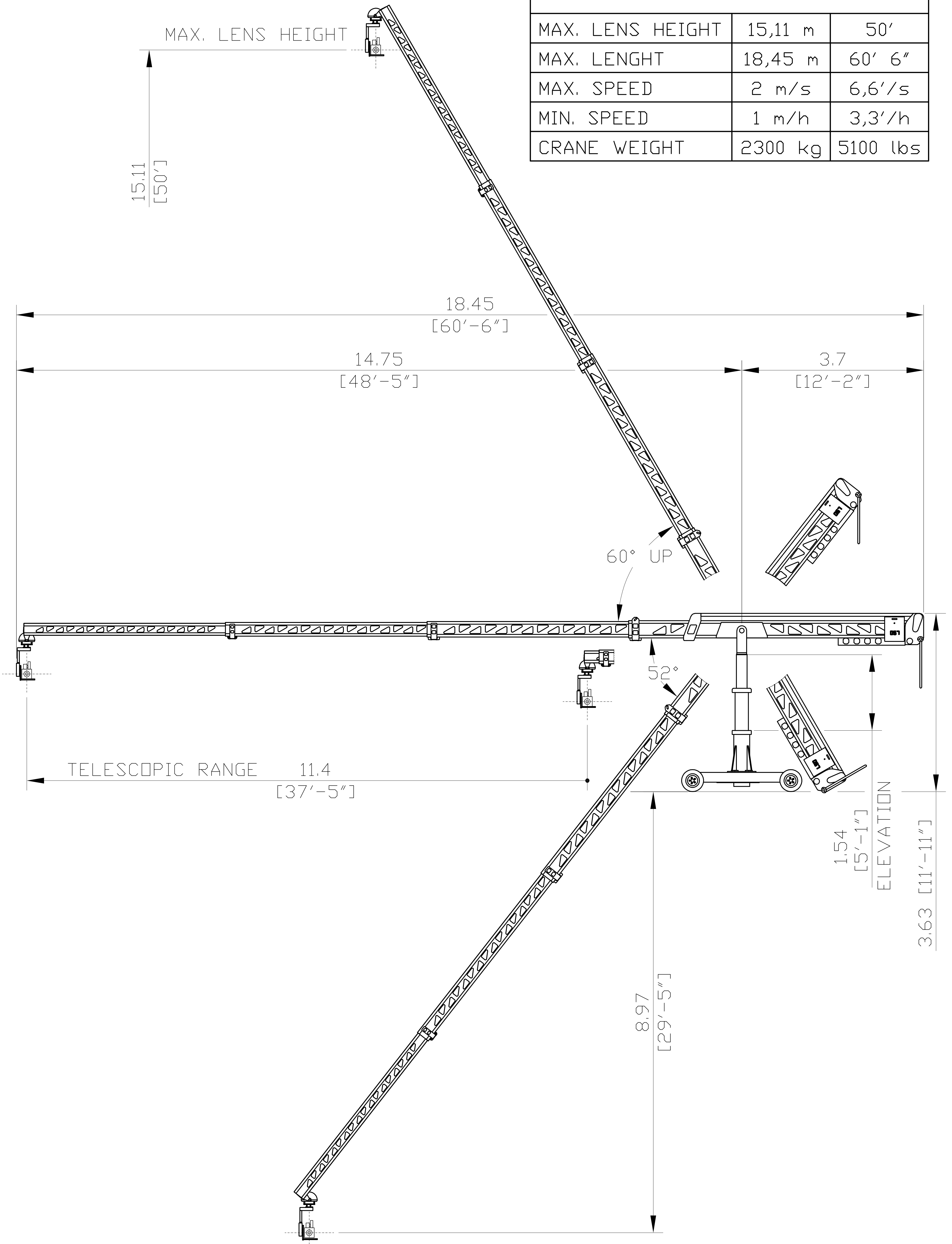
Weight list

Last updated 15.5.2014

Part	kilograms	pounds
Base	492	1085
Leveling Jacks (4 x 17 kg)	68	150
Column with fork	412	908
Beamunit	579	1276
Counterweights (60 x 13,5 kg)	810	1786
4 x Donuts (4 x 7 kg)	28	62
3 x Sliding weights (3 x 4,5 kg)	13,5	30
Electronic Unit	76	167
Z-Head	24	53
Supertechno 50 (incl. 20 kg camera)	2520	5555
One Track (3 m/10 ft.)	68	150

SUPERTECHNO 50

MAX. LENS HEIGHT	15,11 m	50'
MAX. LENGHT	18,45 m	60' 6"
MAX. SPEED	2 m/s	6,6'/s
MIN. SPEED	1 m/h	3,3'/h
CRANE WEIGHT	2300 kg	5100 lbs



SUPERTECHNO 50

