

SCORPIO 30'

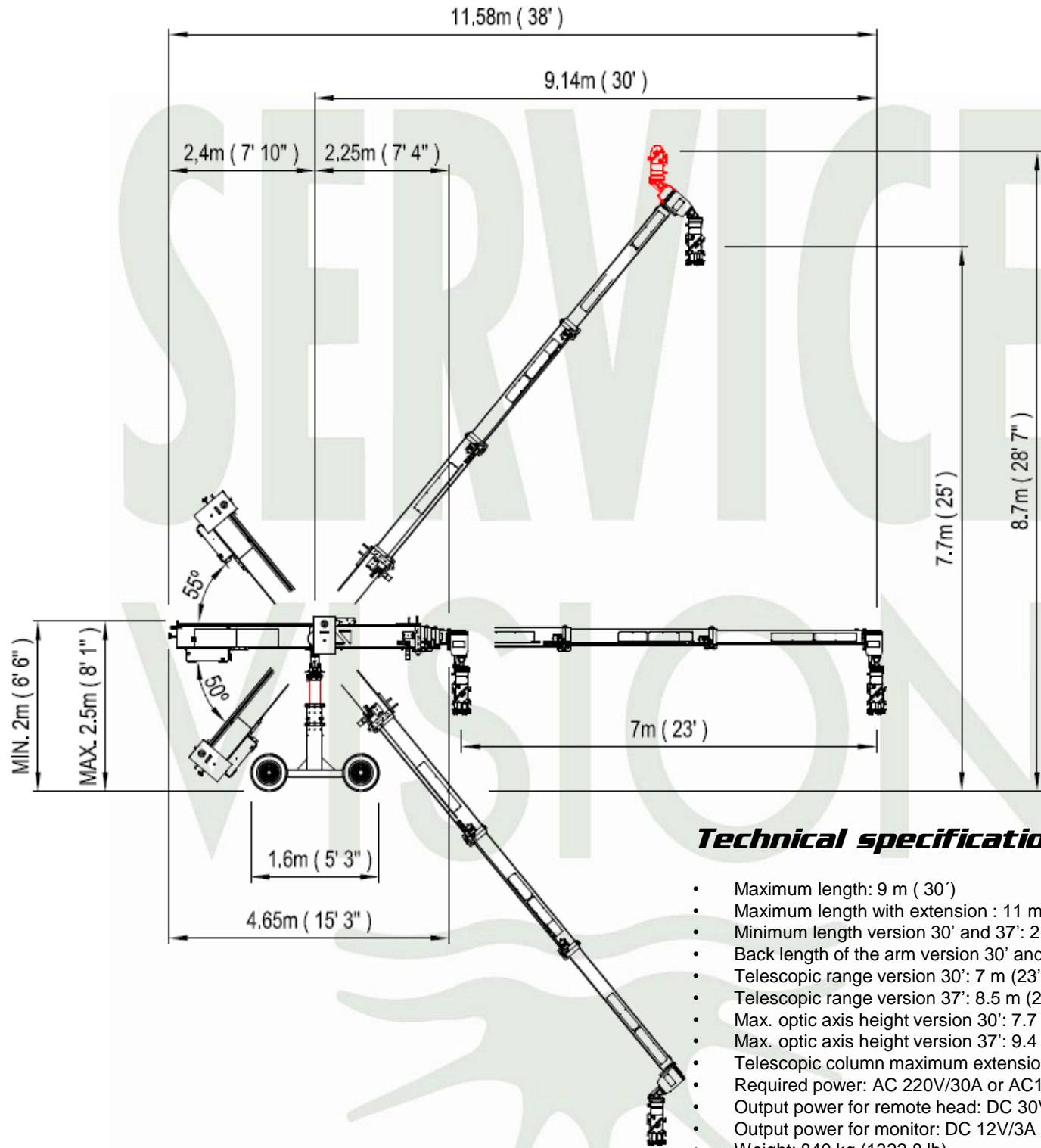
Scorpio 30 Specs:

Max lens height	25'
Max lens height with 7' extension (max 99 lb payload)	30'
Max overslung lens height	28'- 7"
Telescoping travel	23'
Telescoping range with 7' extension	27'
Telescoping max speed	6' per sec
Full extension reach from post	30'
Full extension reach from post with 7' extension	37'
Full retracted reach from post	7'- 4"
Rear length from post	7'- 10"
Overall length of arm retracted	15'- 2"
Overall length extended	37'-10"
Min clearance	6'- 7"
Max arm tilt angle	55 degrees
Base width	5'- 2" (4'- 4" with hard wheels SC30#1 only)
Base length	5'- 6"
Min Clearance required with handles	
Max payload	154 lbs
Arm weight	650 lbs
Total crane weight with payload	3300 lbs
10' section of GI track	50 lbs



Features:

- Automatic compensator of the arc generated by the arm in both horizontal and vertical movements.
- Programmable limits on the telescopic movement of the arm.
- Motion generator of the telescopic arm in relation to the horizontal or vertical movements.
- Memorization of the arm movement.
- Arm speed, adjustable and displayed on the screen.
- Arm stop damping adjustable and displayed on the screen.
- Over-slung and Under-slung ability.
- Screen display of the arm range, vertical and horizontal angles, height to the optic axis in meters and feet.
- Programmable stop sequence.
- Tilt, Pan and Arm encoder reading for Motion Capture jobs.
- Smooth movement of both high and low speed.
- Noise reduction system of the telescopic arm movement.
- Mechanical lift for the telescopic column.
- 7' arm extension to go from 30' to 37'. This extension does not increase the size of the crane in closed position.



Technical specifications:

- Maximum length: 9 m (30')
- Maximum length with extension : 11 m (37')
- Minimum length version 30' and 37': 2.25 m (8')
- Back length of the arm version 30' and 37': 2.4 m (7')
- Telescopic range version 30': 7 m (23')
- Telescopic range version 37': 8.5 m (27')
- Max. optic axis height version 30': 7.7 m (25')
- Max. optic axis height version 37': 9.4 m (30')
- Telescopic column maximum extension: 0.5 m (2')
- Required power: AC 220V/30A or AC110V/30A
- Output power for remote head: DC 30V/20A
- Output power for monitor: DC 12V/3A
- Weight: 840 kg (1322.8 lb)
- Max. Weight with counterweight: 1500 kg (2425 lb)
- Payload in under-slung version 30': 70 kg (154 lb)
- Payload in underslung version 37': 45 kg (99 lb)
- Payload in overslung version 30' and 37': 30 kg (66 lb)

