

# ***SUPERTECHNO***

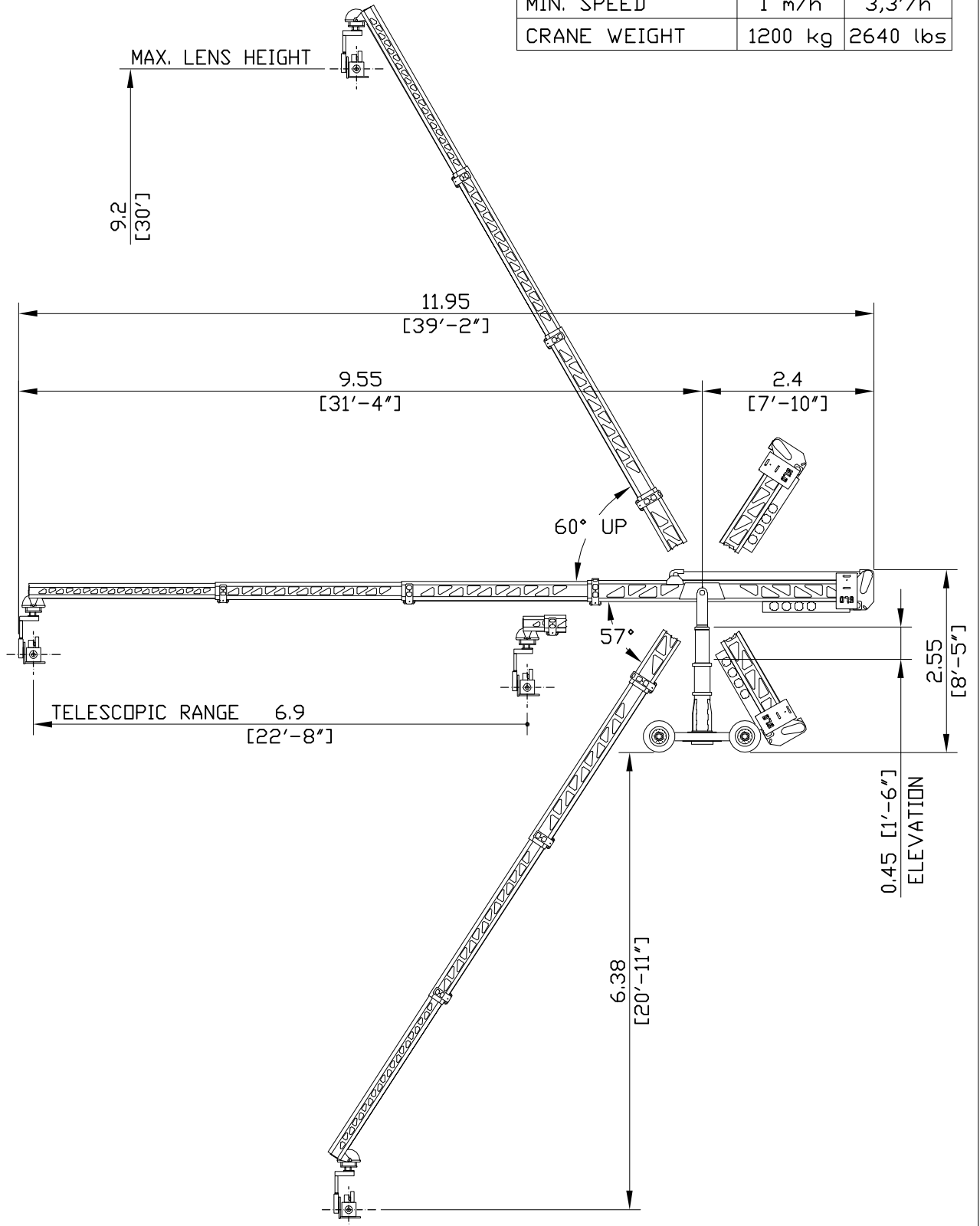
## 30

### **Supertechno 30 Specs:**

|                                  |            |
|----------------------------------|------------|
| Max lens height                  | 30'        |
| Max overslung lens height        | 32'- 6"    |
| Telescoping travel               | 22'- 87"   |
| Telescoping max speed            | 9' per sec |
| Full extension reach from post   | 31"- 4"    |
| Full retracted reach from post   | 18'- 8"    |
| Rear length from post            | 7'- 10"    |
| Overall length of arm retracted  | 16'- 7"    |
| Overall length extended          | 39'- 2"    |
| Min clearance                    | 6'- 11"    |
| Max arm tilt angle               | 60 degrees |
| Base width                       | 4'- 6"     |
| Base length                      | 5'- 5"     |
| Track width center to center     | 4'- 9"     |
| Max payload                      | 186 lbs    |
| Arm weight                       | 706 lbs    |
| Base weight                      | 603 lbs    |
| Total counterweight in carts     | 1340 lbs   |
| Total crane weight with payload  | 2980 lbs   |
| 10' section of Technocrane track | 106 lbs    |

# SUPERTECHNO 30

|                  |         |          |
|------------------|---------|----------|
| MAX. LENS HEIGHT | 9,2 m   | 30'      |
| MAX. LENGTH      | 11,95 m | 39' 2"   |
| MAX. SPEED       | 1,4 m/s | 4,6'/s   |
| MIN. SPEED       | 1 m/h   | 3,3'/h   |
| CRANE WEIGHT     | 1200 kg | 2640 lbs |



# SUPERTECHNO 30

